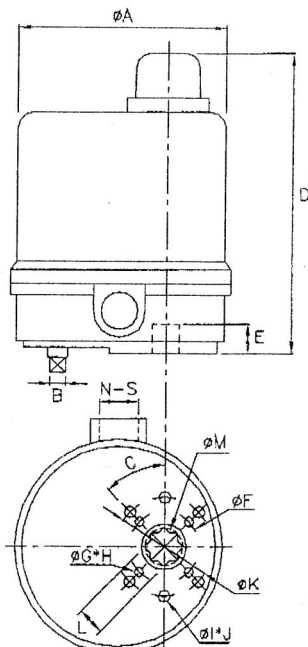


Electric Actuator Type : EL300

Power (Watts)	10w
Max Torque (Nm)	35
Speed (Sec/90°)	12
Weight (Kg)	2.0
Manual Override	Lever
Mounting Flange	F03F05

A	114
B	8
C	45°
D	155
E	15
F	36
G	M6
H	4
I	M6
J	6
K	50
L	
M	19
N	1
S	½ PS
Flange Type	F03F05



Enclosure

- Enclosure: IP67: Waterproof and dust-proof enclosures
- NEMA 4X: Waterproof and dust proof enclosures
- Material: Dry powder coating aluminum alloy

Motor

- Standard extended duty cycle induction motor: H insulation class for EL300
- Built in thermal protection (135°C) prevents motor burning out

Position Indicator

- All models have continuous mechanism position indicator on the top of the actuator cover

Manual Override

- Non-clutch design, the manual operation can be operated without any lever, clutch or brake upon power outage
- When electric motor is in operation, manual hand-wheel won't rotate for person safe purpose

Gear Train

- High alloy steel gear trains provide self locking function to avoid valve back drive
- Gear trains have already lubricated sufficiently with anti-high temperature lubricant at the factory

Working Conditions

- Ambient temperature: -30 ~ +65
- The humidity: 30% ~ 95%

Various Options

- Space heater
- Additional Limit switches (2 units) as standard
- Potentiometer unit (1k Ohm or 5k Ohm)
- Local control unit (local/remote, on/off)
- Conduit entrance ½" PS, ¼" PF, ½" NPT
- Torque Switches (2 units)
- Current position transmitter (output 4-20mA)
- Modulating controller
- Various Voltages
- Nylon enclosure material

Certificates

- ISO 9001
- CE
- CSA (Conforming to test of outdoor usage)

Dimension & Technical Details – EL300