

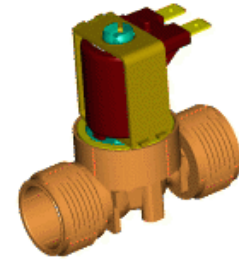
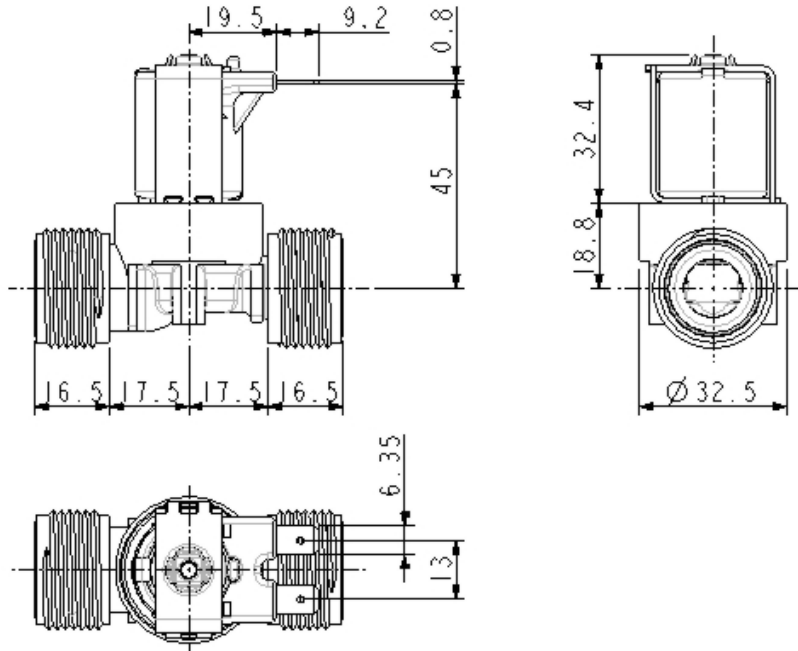




Page 15	2008	Telephone 01707-642018	Data Sheet
 www.everyvalve.com	Nylon Washing Machine Solenoid Valve		 Sales@everyvalve.com



Inlet Thread: 3/4" BSP, 3/8" BSP or 1/2" BSP

Outlet Thread: 3/4" BSP, 3/8" BSP or 1/2" BSP

Part of an extensive line of pilot operated solenoid valves for use in washing machines, dishwashers, showers, air cond Fully flexible and designed and produced to meet the stringent requirements in the markets of today and the future.

Fully flexible and designed and produced to meet the stringent requirements in the markets of today and the future.

Rated Voltage :	220-240 vac, 110-120 vac, 24 vac/dc, 12 vac/dc
Rated Frequency :	50-60 Hz
Power Draw :	6 Watts at 230vac
Coil Insulation :	Class F (140°C Operating Temperature)
Ambient Temperature :	60 °C maximum.
Liquid Temperature :	90°C maximum.
Operating Cycle Rate :	Tu 25°C, Tm 90°C & Tu 60°C, Tm 25°C - Continuous (100% ED) Tu 60°C, Tm 90°C - 3minutes ON, 5 minutes OFF
Operating Pressure Range :	0.2 to 10 bar
Flow Regulator (Optional) :	4 to 17 Litres/minute (3/4" BSP Inlet version only)
EMC :	Fully compliant
Approvals :	Approved by all Major Approvals Agencies World-wide. EN 60 730-2-8, UL 429, C SA C22.2 etc. WRAS
Insulation :	Class II. Fully double insulated. No grounding required.
Terminals :	Two 6.35 x 0.8 mm male tab terminals. RAST 5 and RAST 2.5 Optional.