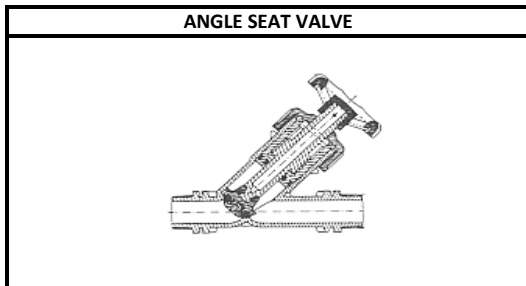
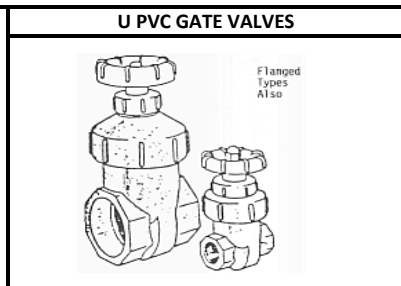


## PLASTIC AND METAL Valves : PP / UPVC / NYLON / BRASS



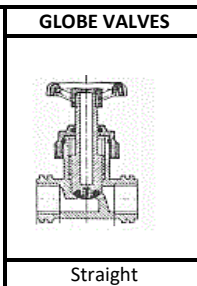
**ANGLE SEAT VALVE**  
 Material ----- Black Polypropylene  
 Pressure ----- 0 to 10 Bars  
 Seal Material - Nitrile Rubber  
 Connections -- Male BSP ends  
 Temperature -- 5°C - 80°C  
 Applications -- Water / Air (light use)

Ref	Size	Wt	Length	Price
	BSP (M)	gms	mm	
13P30405	1/2"	140	134	£14.74
13P30407	3/4"	192	151	£15.88
13P30410	1"	292	170	£20.41
13P30412	1.25"	478	200	£53.30
13P30415	1.5"	734	225	£60.10
13P30420	2"	1200	254	£73.71

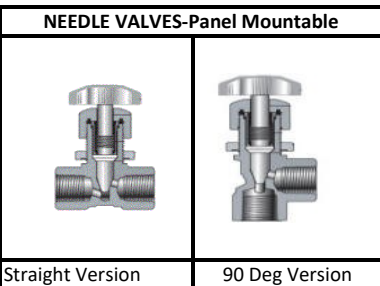


**U PVC GATE VALVES**  
 Material ----- Grey U PVC  
 Pressure ----- 0 to 10 Bars  
 Seal Material - EPDM Rubber  
 Connections -- Plain or BSP  
 Temperature -- + 5°C - 50°C  
 Applications -- Water / Chemical

Plain Sockets	BSP Socket	Size	Price
13P2007	13P2107	3/4"	£33.63
13P2010	13P2110	1"	£39.50
13P2012	13P2112	1¼"	£55.06
13P2015	13P2115	1½"	£70.62
13P2020	13P2120	2"	£89.78
13P2030	-	3"	£524.40
13P2040	-	4"	£1,037.40

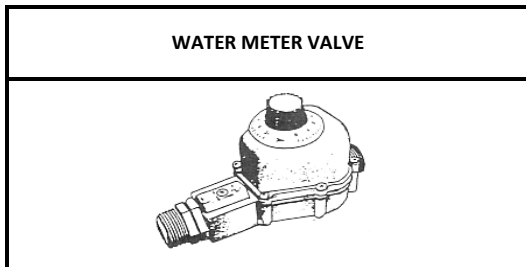


**GLOBE VALVES**  
 Straight  
 Black PP  
 0 - 10 Bar  
 EPDM Seals  
 BSP F  
 0 - 80 C  
 Water/Air/Chem.



**NEEDLE VALVES-Panel Mountable**  
 Straight Version  
 90 Deg Version  
 UPVC - Grey  
 0 - 10 Bar  
 PTFE Seals  
 BSP F  
 0 - 50 C  
 Water/Air/Chem.

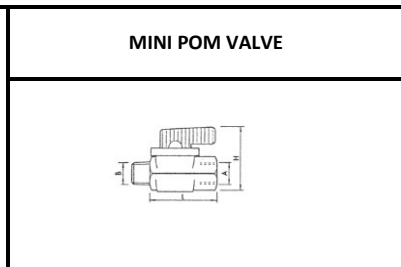
Globe (PP)					
Ref:	Size	Flow Max	Wt gms	Lgth mm	Price
13P3307	3/4" BSP	TBA	116	78	£13.23
13P3310	1" BSP	TBA	130	82	£14.52
Needle Valve in PVC (Straight is Std) for Fine Control					
Ref:	Size	CV	Wt gms	Lgth mm	Price
13P1302	1/4" NPT	0.31	125	58	£56.93
13P1307	3/8" NPT	0.31	125	60	£58.65
13P1305	1/2" NPT	0.62	140	67	£60.95



**WATER METER VALVE**  
 Material ----- Yellow Nylon / Brass  
 Seals ----- Nitrile  
 Pressure ----- 0.5 to 6 Bars  
 Temperature -- 0°C to 60°C  
 Gears ----- ACETAL Resin  
 Metal Parts --- Stainless

Ref	Size	Range	Price	Mat
13M6107	3/4" M	0 to 2m <sup>3</sup>	£59.00	N
13M6107b	3/4" M	0 to 10m <sup>3</sup>	£59.00	N
13M6110	1" M	0 to 1m <sup>3</sup>	£89.00	B
13M6110b	1" M	0 to 3m <sup>3</sup>	£89.00	B
13M6110c	1" M	0 to 10m <sup>3</sup>	£89.00	B
13M6110d	1" M	0 to 50m <sup>3</sup>	£89.00	B
13M61015	1½" M	0 to 10m <sup>3</sup>	TBA	B
13M61015b	1½" M	0 to 50m <sup>3</sup>	TBA	B
13M61015c	1½" M	0 to 100m <sup>3</sup>	TBA	B
13M6120	2" M	0 to 40m <sup>3</sup>	TBA	B
13M6120b	2" M	0 to 100m <sup>3</sup>	TBA	B
13M6120c	2" M	0 to 400m <sup>3</sup>	TBA	B

Applications: Self closing flow of water by adjustable dial up to valves in table. Between 30 to 50 dial graduations. Where very accurate measurement is required a choice of other equipment is recommended.



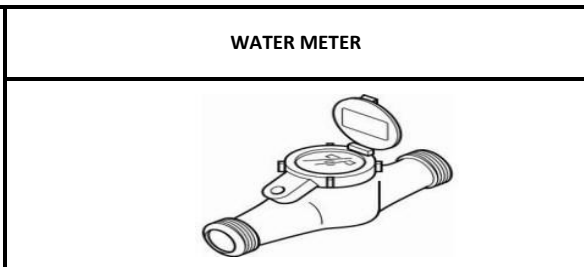
**MINI POM VALVE**  
 Size -- 1/4" BSP MF  
 Body -- Hexagon Ball Valve  
 Material - Black POM + Buna  
 Pressure - to 8 Bars  
 Weight -- 27 gms  
 BSP length - 10mm  
 Length \* L -- 49mm Height 'H' \* - 45mm

[Ref: T022200](#) [Price : Tefen Page](#)

Volume Conversion Table	
1 m <sup>3</sup>	= 1000 Litres
4.54 Litres	= 1 Gallon
225 Gallon	= 1 m <sup>3</sup>



NB: All above products except 'PVC' gate valves are generally to be used for water only. Ask EvE for advice. Electronics also.



**WATER METER**  
 Material ----- Painted Brass / C.I.  
 Seals ----- Nitrile \* = B89-31707  
 Pressure ----- 0 to 16 Bars  
 Temperature -- 0°C to 45°C  
 Magnetic Drive Multi Jet Principle  
 Numeric scale + dials down to .001 cu M.

Ref	Size	m <sup>3</sup> /Hour	m <sup>3</sup> /Hour	Price
		Min	Max	
13M6005	*1/2" M	0.030m <sup>3</sup>	3m <sup>3</sup>	£30.80
13M6007	*3/4" M	0.050m <sup>3</sup>	5m <sup>3</sup>	£68.20
13M6010	1" MBSP	0.075m <sup>3</sup>	7m <sup>3</sup>	£110.00
13M6012	1¼" BSP	0.100m <sup>3</sup>	10m <sup>3</sup>	£124.30
13M6015	1½" BSP	0.100m <sup>3</sup>	20m <sup>3</sup>	£237.60
13M6020	2" BSP	0.450m <sup>3</sup>	12m <sup>3</sup>	£306.90
13M6030	3" Flg	TBA	TBA	£792.00
13M6040	4" Flg	TBA	TBA	£924.00
13M6060	6" Flg	TBA	TBA	£1,254.00
13M6080	8" Flg	TBA	TBA	£2,106.50

Figs=PN16. Versions available: hot water  
 Recommended maximum flow per month:-  
 Sizes: 1/2" & 3/4" to 250m<sup>3</sup>  
 1" & 1¼" to 370 m<sup>3</sup>  
 1½" & 2" to 2,000 m<sup>3</sup>  
 3"+ to 3,000 m<sup>3</sup>  
 RESETABLE TYPE 1" :-  
 This can be supplied if required. Type FR price is £ 315.00

PLEASE NOTE : Prices subject to change without prior notice.

updated 01/02/2018