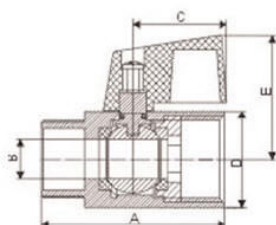
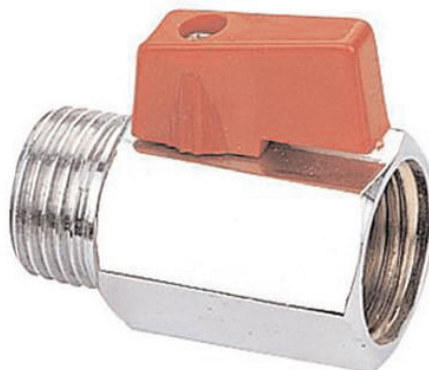


## Brass mini ball valves



C.P forged mini ball valve  
red handle; FxM  
ISO228 thread

Size: 1/8" ~ 3/4"



Size(mm)	1/8"	1/4"	3/8"	1/2"	3/4"
A	36	39.5	40	46	54
B	5.5	8	8	9.5	13.5
C	22	22	22	22	22
D	19	21	21	25	30
E	26.5	28	28	29.5	32.5

### Technical features:

Suitable for domestic water services, heating and air-conditioning plants, compressed air systems.

Minimum and maximum working temperature:

- 15°C, 100°C.

Available: in all sizes from 1/8" up to 3/4".

### Materials:

Valve Body: C.P. Polished Brass

Handle: ABS

Ball: Hard chrome-plated brass

Seal: P.T.F.E.

Stem: Brass

Stem-seal: Brass

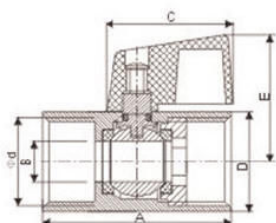
O-Ring: NBR

## Brass mini ball valves



C.P forged mini ball valve  
red handle; FxF  
ISO228 thread

Size: 1/8" ~ 3/4"



Size(mm)	1/8"	1/4"	3/8"	1/2"	3/4"
A	36	39.5	40	46	54
B	5.5	8	8	9.5	13.5
C	22	22	22	22	22
D	19	21	21	25	30
E	26.5	28	28	29.5	32.5

### Technical features:

Suitable for domestic water services, heating and air-conditioning plants, compressed air systems.

Minimum and maximum working temperature:

- 15°C, 100°C.

Available: in all sizes from 1/8" up to 3/4".

### Materials:

Valve Body: C.P. Polished Brass

Handle: ABS

Ball: Hard chrome-plated brass

Seal: P.T.F.E.

Stem: Brass

Stem-seal: Brass

O-Ring: NBR